



Loreto  
sixth form College

# Our History, Your Future

Prospectus 2022/2023



  
**Ofsted**  
Outstanding  
Provider



# OUTSTANDING RESULTS 2021



<p>EXCELLENT PASS RATE OF</p> <p><b>99.6%</b></p>	<p>HIGH GRADES ON A LEVEL COURSES ARE ABOVE</p> <p><b>65%</b></p>	<p><b>1630</b></p> <p>A* - A GRADES AWARDED</p>
<p><b>20</b></p> <p>LORETO STUDENTS GAINED OXBRIDGE PLACES</p>	<p><b>98%</b></p> <p>A* - B GRADES ON THE EXTENDED PROJECT QUALIFICATION</p>	<p>OUTSTANDING HIGH GRADES ON VOCATIONAL COURSES</p>

# WELCOME TO LORETO COLLEGE

<a href="#">4</a> Our history, your future	<a href="#">14</a> Social Responsibility Awards	<a href="#">28</a> Languages and Arts	<a href="#">39</a> Loreto's mission
<a href="#">6</a> Support	<a href="#">16</a> What can I study?	<a href="#">32</a> Opportunities and Enrichment	<a href="#">40</a> Applications
<a href="#">8</a> Outstanding in every respect	<a href="#">18</a> Other courses	<a href="#">36</a> Sport	<a href="#">41</a> College entry requirements
<a href="#">10</a> Loreto students	<a href="#">20</a> Science and Maths	<a href="#">38</a> Loreto worldwide	<a href="#">42</a> Calendar
<a href="#">12</a> High Achievers' Programme	<a href="#">24</a> Social Sciences	<a href="#">39</a> Loreto values	<a href="#">43</a> How to find us

At Loreto, we are committed to enabling you to develop academically, spiritually and personally during your time with us and to get you ready for your next stage of your life whether it is university, apprenticeship, or employment. We have an excellent team of staff who are experts in sixth form education and will support and challenge you to achieve your very best and prepare you for the future.

Choosing your college is a big decision; our prospectus aims to guide you through the options so that in the important transition to foundation, intermediate or advanced level study you find the right college and course for you.

We encourage you to take time to explore the range of options available to you at Loreto. Be curious, research and ask questions. Visit our website and courses pages where you will find more information about the superb facilities and campus and your subject areas of interest.



We look forward to meeting you and to enabling you to get a sense of the values which underpin our ethos: Excellence, Freedom, Joy, Sincerity, Truth, Justice and Internationality.

**Michael Jaffrain**  
Principal





# OUR HISTORY, YOUR FUTURE



## SUCCESS

In becoming a Loreto student, you will be joining a highly successful, high achieving academic community.

“LORETO IS A VERY SUPPORTIVE COLLEGE WITH OUTSTANDING FACILITIES AND A WIDE VARIETY OF ENRICHMENT ACTIVITIES TO HELP STUDENTS REACH THEIR FULL POTENTIAL.

” Eve Gloster

## FACILITIES

Our six modern buildings sit in a green and leafy university style campus.

Whilst our facilities are very modern our history is also very important to us; for example, our Victorian chapel is incorporated sensitively into our Art block.

Subject specific facilities include music recording studios, editing suites, a media production space, a television studio, an in-house cinema, a dance studio, industry standard theatre and 13 specialist science laboratories.

Facilities across campus include:

- **TWO STUDENT CAFETERIAS**
- **THREE MULTI-MEDIA LEARNING RESOURCE CENTRES**
- **ON SITE SPORTS CENTRE**
- **LARGE, DEDICATED SPORTS FIELDS.**

“LORETO HAS PROVIDED ME WITH OUTSTANDING SUPPORT.

” Sonia Malik



## PROGRESSION

Living and learning at Loreto College is a wonderful experience in itself. It is also an excellent preparation for progression to Higher Education.

The intensive help and thorough guidance that Loreto students receive in the process of application to university and further study is outstanding.



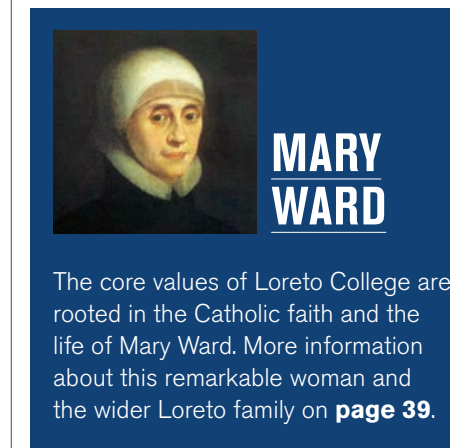
“LORETO IS AN AMAZING COLLEGE WHERE I HAVE MET LOADS OF AWESOME PEOPLE AND MADE NEW FRIENDS.

” Rosy Wilson

## TRADITION

In joining our College in September 2022, you will become part of a long established academic community.

Although our buildings and facilities are modern and up-to-date, we have been educating generations of Manchester students since 1851. You will also become part of a worldwide Loreto community, a member of an international network of schools and colleges spanning the globe.



The core values of Loreto College are rooted in the Catholic faith and the life of Mary Ward. More information about this remarkable woman and the wider Loreto family on **page 39**.





# SUPPORT

We pride ourselves on our longstanding tradition of effective support. Our responsive student support network will give help and encouragement to you at every stage of your career at Loreto.



## CAREERS

Whether your goal after Loreto is university, an apprenticeship or employment, our dedicated Careers Department provides a wide range of support and opportunities. These include individual appointments with careers advisors, talks from industry professionals, university visits and the Loreto Careers Fair, with exhibitors from over 90 different universities, employers and training providers.



## LORETO'S HALLS

Loreto's 12 Hall groups are the focus for many charitable, voluntary and social activities. Being a member of a Hall provides every student with the opportunity to fully participate in, and even direct and lead, life at Loreto. Halls are led by Heads of Hall who are available for advice and assistance on any matter. Within your Hall you will belong to a tutor group, a group of students who meet their tutor through the week. If you have any concerns – inside or outside the classroom – feel free to discuss them with your tutor.

“MY TIME AT LORETO HAS BEEN AMAZING, THE SUPPORT AND RESOURCES THEY OFFER IN TERMS OF CAREERS AND NEXT STEPS AFTER COLLEGE HAVE HELPED ME TREMENDOUSLY.”

” Ammar Motala



## CHAPLAINCY

The Chaplaincy is a space for all students at Loreto, whether you're striving for a better world; need a break from the hustle and bustle of life; want to make time for God and the spiritual in your life; need someone to chat to if you're having any difficulties; or if you just need a quiet space to go to reflect.



“ALL STAFF FROM ACROSS THE COLLEGE WORK TOGETHER COHERENTLY TO SUPPORT STUDENTS TO ACHIEVE.”

” Ofsted



“OUTSTANDING IN EVERY RESPECT.”

” Ofsted

## SEND AND OTHER SUPPORT

The jump from high school to studying at college can sometimes leave students feeling anxious and at times they may feel that they would like a helping hand. The Faculty of Academic Support can offer guidance in study skills, aiming to enable students to reach their true potential by helping them with time management, essay writing techniques, organisation of notes, revision strategies, and building confidence and self-esteem.

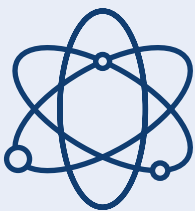
At Loreto, we support a whole range of students with specific learning differences, such as dyslexia, dyspraxia and ASD, as well as students with hearing impairments, visual impairments and mobility issues. Our support can range from in class support, weekly one-to-one sessions, mentoring, loan of equipment and Exam Access Arrangements.



# OUTSTANDING IN EVERY RESPECT



Loreto College has achieved **‘outstanding’** status in **every Ofsted category** and has been described as **‘outstanding in every respect’** by inspectors. Loreto is one of the few colleges in the country to achieve a **completely outstanding profile**. The grade 1 description of **‘outstanding’** was used **35 times** in Loreto’s Ofsted report.



SCIENCE  
AND  
MATHEMATICS  
**GRADE 1,  
OUTSTANDING**



ENGLISH,  
LANGUAGES  
AND CULTURE  
**GRADE 1,  
OUTSTANDING**



BUSINESS,  
ADMINISTRATION  
AND LAW  
**GRADE 1,  
OUTSTANDING**



VISUAL AND  
PERFORMING  
ARTS AND MEDIA  
**GRADE 1,  
OUTSTANDING**



## WHAT MAKES US OUTSTANDING

“STUDENTS MAKE EXCEPTIONAL PROGRESS DURING THEIR TIME AT COLLEGE.”

” Ofsted



“THE COLLEGE IS IMBUED AT EVERY LEVEL WITH A CULTURE OF HIGH ASPIRATIONS AND EXPECTATIONS.”

” Ofsted



“TEACHING, LEARNING AND ASSESSMENT ARE OUTSTANDING. STUDENTS SPEAK HIGHLY OF THE QUALITY OF TEACHING AND LEARNING.”

” Ofsted

“THE COLLEGE MAKES AN EXCEPTIONAL CONTRIBUTION TO COMMUNITY COHESION.”

” Ofsted

## AWARDS

Loreto has been awarded a number of prestigious honours including:

THE QUEEN’S  
ANNIVERSARY PRIZE  
FOR FURTHER AND  
HIGHER EDUCATION

A MEMBER OF THE  
TEACH MANCHESTER  
ALLIANCE

BEACON  
COLLEGE  
STATUS



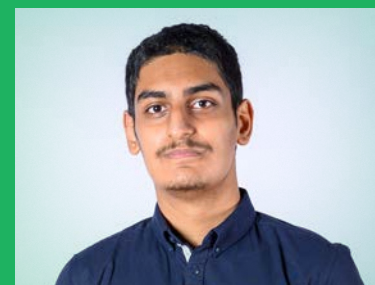
# LORETO STUDENTS



**CHARLOTTE GOVEY** is a former student of **Priestnall School** and studies English Language and Literature, Geography and Psychology at Loreto.



**ELEANOR MAHER** is a former student of **Chorlton High School** and studies Geography, Government and Politics and Photography at Loreto.



**HAARIS GHANI** is a former student of **Manchester Academy** and studies Economics, Maths and Physics at Loreto.



**MABEL KABUTEY** is a former student of **St Thomas More RC College** and studies Biology, Chemistry and Geography at Loreto.



**JOSEPH DAVIES** is a former student of **St Ambrose Barlow RC High School** and studies Economics, Maths and Further Maths at Loreto.



**KEVIN STENGERT** is a former student of **Wright Robinson College** and studies Economics, German and Maths at Loreto.



**IRHA BHATTI** is a former student of **Whalley Range High School** and studies English Language, Law and Psychology at Loreto.



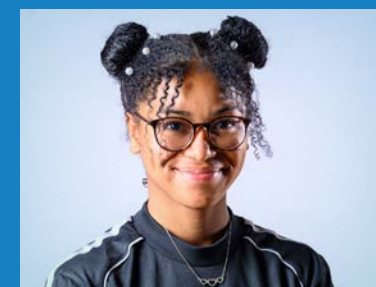
**OLIVIA RODGERS** is a former student of **St Matthew's RC High School** and studies Biology, German and History at Loreto.



**PHOEBE LAM** is a former student of **St Patrick's RC High School** and studies Biology, Chemistry and English Language at Loreto.



**SAMUEL HOPKINS** is a former student of **Co-op Academy Walkden** and studies Physics, Maths and Further Maths at Loreto.



**UKI EDOKPOLOR** is a former student of **Our lady's RC High School** and studies Biology, Chemistry and French at Loreto.



**AMBER STATHAM** is a former student of **Moorside High School** and studies Geography, Sociology and BTEC Health and Social Care at Loreto.





# HIGH ACHIEVERS' PROGRAMME

Loreto's High Achievers' Programme (HAP) prepares students for the distinctive demands of Oxford and Cambridge (Oxbridge) and for competitive courses at 'research intensive' Russell Group universities.

## HIGH ACHIEVERS' PROGRAMME

Loreto College runs a nationally celebrated programme to support our most able students. The programme combines developing students' debating and thinking skills with individual support throughout the university application process. Our in-house team of specialist teachers has years of experience in successfully guiding applicants to gain places at the UK's most prestigious universities, and in helping students to develop the skills necessary to thrive in these demanding environments. Alumni from the HA programme include students at Oxford, Cambridge, LSE and Imperial College. Loreto students' success rate for applications to Oxbridge has consistently been significantly higher than the national average over a number of years and is comparable to schools in the independent sector.



## MEDICS, DENTISTS AND VETS

The Medics, Dentists and Vets (MDV) programme has been developed over a number of years to provide dedicated support to students seeking to enter these professions. Students are provided with specialist support throughout their time at Loreto, including talks, help with gaining work experience, UKCAT & BMAT training, writing personal statements and multiple mock interviews.

## EXTENDED PROJECT QUALIFICATION (EPQ)

The EPQ is a Level 3 qualification, which gives students an opportunity to carry out extended work beyond the standard A level syllabus. Students work on a project of their own devising, on a topic of particular interest to them.

The EPQ gives students the opportunity to develop their independent study skills whilst receiving one-to-one support from specialist supervisors. The EPQ is increasingly being used as a discriminator by universities, giving students an additional opportunity to stand out in the competition for places at the best universities.

## CAMBRIDGE HE+

Loreto is a north west hub for Cambridge University's HE+ programme. The programme engages potential applicants in Year 12 by offering stretch and challenge activities outside the A level specification, to prepare them for study at elite universities. The programme includes in-College extension classes, lessons at other Cambridge HE+ centres and residential courses at Cambridge University.

## MIA OXER is a former student of Marple Hall School.

During her time at Loreto, Mia was a member of the High Achievers' Programme, took part in the Duke of Edinburgh's Silver Award and the College musical. Mia is now studying Geography at Mansfield College, Oxford.



“LORETO IS AN AMAZING COLLEGE THAT HAS PROVIDED ME WITH MANY FANTASTIC OPPORTUNITIES TO PROGRESS IN MY CURRENT STUDIES AS WELL AS EXPLORE FUTURE CAREER PATHWAYS.”

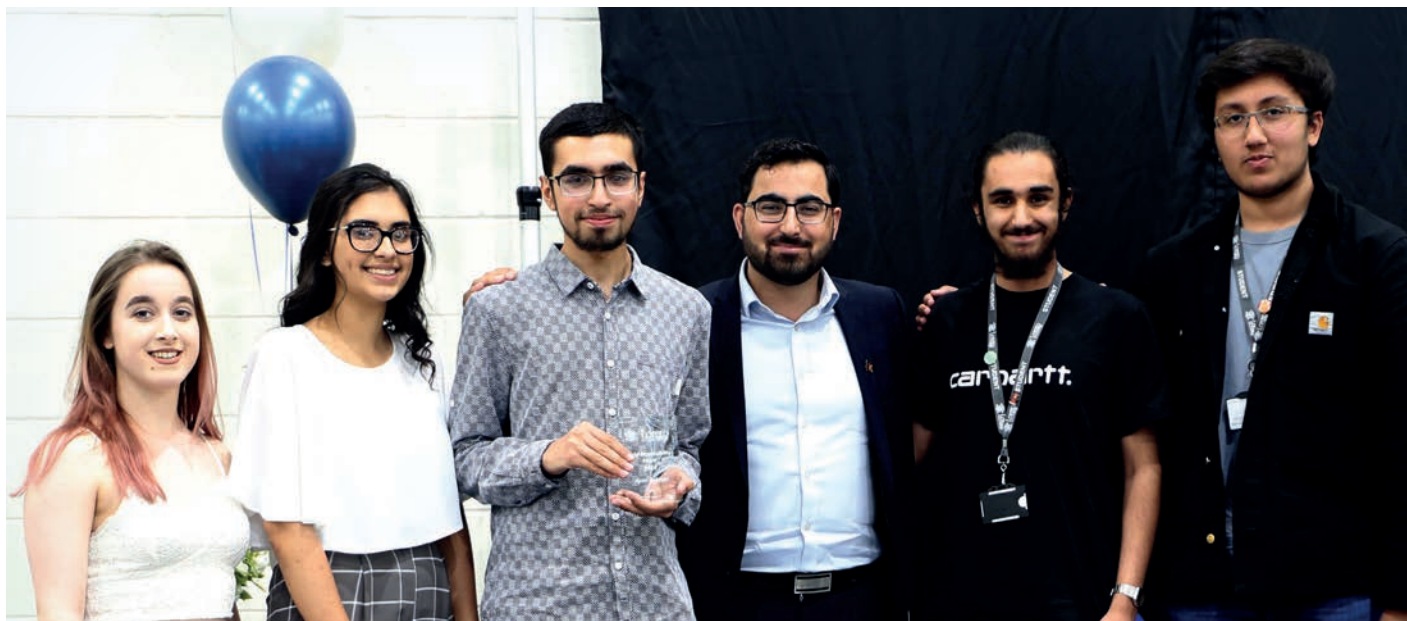
” Sumanah Praburaj

## Aondoyima Ioratim-Uba

Aondoyima is a former student of Loreto High School Chorlton. After completing his A levels at Loreto College he went on to study Physics at Mansfield College, Oxford. Aondoyima was very active in college life and gained the Mansfield College award for being the outstanding student during his final year. Aondoyima gained a first-class Honours Degree in Physics from Oxford and is now studying for a PhD.







# SOCIAL RESPONSIBILITY AWARDS

*At the Loreto College Social Responsibility Awards members of the Loreto family nominated worthy recipients, who have gone that ‘extra mile’ and made a real difference in their own communities or further afield.*

“  
MY EXPERIENCE AT LORETO HAS BEEN AMAZING, I’VE MADE LOTS OF LIFELONG FRIENDS AND RECEIVED SUPPORT FROM MY TEACHERS WHENEVER I NEEDED IT.  
”  
Irha Bhatti



# STUDENT PROFILE



**ALEXANDER THORNTON**  
**PREVIOUS SCHOOL**  
ST PATRICK’S RC  
HIGH SCHOOL

**Studied Biology, Chemistry, English Literature and EPQ at Loreto.**

Every one of my teachers has gone above and beyond in the support that they have given, both academically and pastorally, here at Loreto, helping me to achieve my full potential, while ensuring someone is always available to talk to. Many of my teachers have been more than happy to sit down with me and chat about any specific interests I may have to nurture my passion for that subject, something that gave me the chance to talk about something I love all whilst also being great preparation for university interviews. The College has a fantastic learning environment that allowed me to develop an interest in topics beyond the A level

syllabus through opportunities such as the EPQ, University visits, as well as the High Achievers' programme. The fantastic encouragement from staff and peers has helped me to aim for things that I never thought were possible and the resources available across campus have helped me to reach these ambitions. I cannot regret one second of my time spent here and would recommend Loreto to anyone wanting to study further after high school. My time at Loreto has been incredible and has lived up to the College's outstanding reputation, without which I would not be in the position I am today.



# WHAT CAN I STUDY AT LORETO?

Throughout the Loreto College application process you will receive expert advice on subject choices from highly experienced staff who will help guide you on to the right courses.

## LEVEL 3 COURSES

We offer a wide range of different A level and vocational Level 3 courses.

### A LEVEL COURSES

→ 3D DESIGN	→ ENGLISH LITERATURE	→ LAW
→ ACCOUNTING	→ ENGLISH LANGUAGE AND LITERATURE	→ MATHEMATICS
→ ART (FINE ART)	→ FASHION AND TEXTILES	→ MEDIA STUDIES
→ BIOLOGY	→ FILM STUDIES	→ MUSIC
→ BUSINESS	→ FRENCH	→ PHOTOGRAPHY
→ CHEMISTRY	→ FURTHER MATHEMATICS	→ PHYSICS
→ CHINESE (MANDARIN)	→ GEOGRAPHY	→ PSYCHOLOGY
→ CLASSICAL CIVILISATION	→ GERMAN	→ SOCIOLOGY
→ COMPUTER SCIENCE	→ GOVERNMENT AND POLITICS	→ SPANISH
→ DRAMA AND THEATRE	→ GRAPHICS	→ THEOLOGY, PHILOSOPHY AND ETHICS
→ ECONOMICS	→ HISTORY	
→ ENGLISH LANGUAGE	→ ITALIAN	



[LORETO.AC.UK/COURSES](http://LORETO.AC.UK/COURSES)

### LEVEL 3 VOCATIONAL COURSES EQUIVALENT TO THREE A LEVELS

→ HEALTH AND SOCIAL CARE

→ SPORTS STUDIES

→ COMPUTING

→ TRAVEL AND TOURISM

### LEVEL 3 VOCATIONAL COURSES EQUIVALENT TO ONE A LEVEL

These can be studied alongside A levels.

→ APPLIED BUSINESS

→ IT

→ APPLIED SCIENCE

→ PERFORMING ARTS

→ CRIMINOLOGY

→ SPORT

→ HEALTH AND SOCIAL CARE

### EXTENDED PROJECT QUALIFICATION (EPQ)

Loreto also offers the EPQ; a graded, Level 3 qualification, which gives students an opportunity to carry out extension work beyond the standard A level syllabus.



Full course details for each subject can be found on the College website **LORETO.AC.UK**





# OTHER COURSES

## BTEC LEVEL 2 VOCATIONAL COURSES

- HEALTH AND SOCIAL CARE
- INFORMATION AND CREATIVE TECHNOLOGY
- TRAVEL AND TOURISM

## ENRICHMENT QUALIFICATIONS

- ROCK AND POP MUSIC ENRICHMENT
- CREATIVE DANCE
- DUKE OF EDINBURGH'S AWARD

## GCSE COURSES

The College's GCSE courses are offered to students as resit options. Subjects available at GCSE level are:

- ENGLISH LANGUAGE
- MATHEMATICS



### PRE-GCSE: ENGLISH COMMUNICATION AND MATHS PROFICIENCY

College offers a pre-GCSE English course; English Communication, and a pre-GCSE Maths course; Maths Proficiency. These are unit-based courses that enable students to take small steps in developing their basic literacy or numeracy skills. They may also offer progression onto the GCSE English or Maths programme where this is appropriate.

### PATHWAYS TO INDEPENDENCE

The Pathways programme of study is designed for learners with severe to moderate learning difficulties and/or disabilities, working between Pre Entry and E3 (pre GCSE). The delivery of the programme is designed to enable learners to develop their employability skills, independence and prepare for adulthood and is accredited where appropriate.



# STUDENT PROFILE



**EMAN ZAHRA**  
**PREVIOUS SCHOOL**  
CO-OP ACADEMY NORTH MANCHESTER

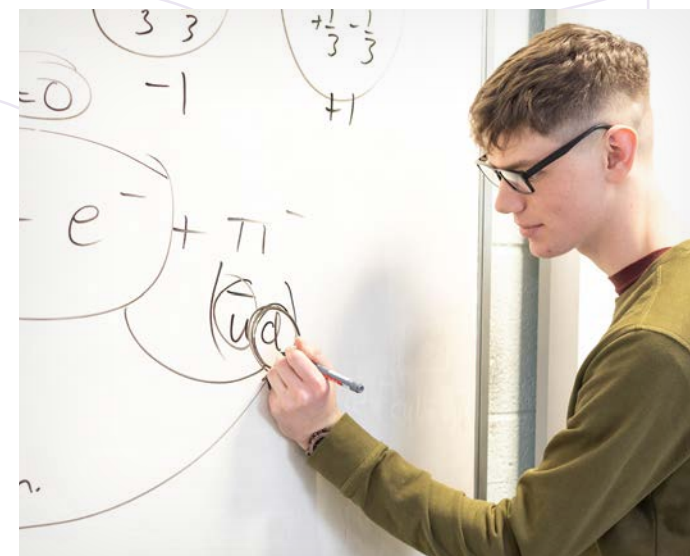
**Completed Level 2 qualifications before studying Level 3 BTEC Health and Social Care at Loreto.**

I chose Loreto College because of the friendly environment, as the teachers made me feel comfortable and welcomed. The staff members in Loreto College helped me build my confidence and helped me achieve my targets and goals, as I was provided with all the help I needed to get the grades I desired. Loreto College has a very supportive system as they ensure that every student is provided with excellent opportunities, facilities and resources.



# SCIENCE & MATHS

Students in the Science and Maths Faculty at Loreto are given a thorough grounding in the fundamentals of the various disciplines, but are also encouraged to think creatively and progressively, exploring the possibilities of each subject and the career opportunities on offer.



## A COMPETITIVE EDGE

**Loreto students are keen to hone their skills outside the classroom and involvement in competitions and projects of all kinds is encouraged.**

Our Chemists regularly take part in the prestigious Cambridge Chemistry Challenge, which includes an advanced level test designed to stretch the most able students, with questions based on cutting edge research that take students way beyond the A level specification. They are also enthusiastic participants in the Chemistry Olympiad, organised annually by the Royal Society of Chemists.

Our Biologists also take part in an Olympiad, pitting their knowledge and abilities against the best students in the

country, each time winning a clutch of prestigious awards.

Loreto Physicists have been given the opportunity to conduct research through the LORIP programme (Loreto Original Research in Physics). We have had great success, with publications in peer reviewed Physics journals and a presentation at the Royal Society. Students have also been offered the opportunity to apply for Nuffield Research placements, and take part in the Institute of Physics Young Persons' Lecture and Poster Competition. Loreto Mathematicians have been involved in the UKMT Senior Maths Challenge, with considerable success.

### ENRICHMENT

**CAMBRIDGE CHEMISTRY CHALLENGE**

**CHEMISTRY OLYMPIAD**

**BIOLOGY OLYMPIAD**

**LORETO ORIGINAL RESEARCH IN PHYSICS**

**NUFFIELD RESEARCH PLACEMENTS**

**SENIOR MATHS CHALLENGE**

“AS A RESULT OF THEIR HIGH ATTAINMENT, STUDENTS ARE ABLE TO APPLY SUCCESSFULLY FOR COURSES WHICH ARE VERY SELECTIVE, INCLUDING MEDICINE, DENTISTRY AND PHYSIOTHERAPY, AT HIGH PROFILE UNIVERSITIES.

” Ofsted

APPLIED SCIENCE

BIOLOGY

CHEMISTRY

COMPUTER SCIENCE

IT

FURTHER MATHS

GEOGRAPHY

MATHS

PHYSICS

SPORT



# THE WIDER WORLD

One element of science-based education at Loreto is the scope given to participate in a range of exciting field trips, both here in the UK and further afield.

For example, our Biologists have travelled to the rainforests of Central America, explored the coral reefs of the Caribbean, carried out turtle conservation in Costa Rica and visited the forests and mountains of the Canadian Rockies.

Biology and Geography students also undertake joint trips to destinations such as California and Iceland.

Closer to home, the departments have also visited the Field Studies Council's facility at Malham Tarn in the Yorkshire Dales, North Wales and the Peak District.



# LECTURES, CLUBS AND PROJECTS



## ENRICHMENT

### SPECIALIST GUEST LECTURES

### CLUBS, SOCIETIES AND ACTIVITIES

The Faculty is proud of the huge range of specialist guest lectures that take place each year, across all the related disciplines, sometimes in College itself, but often at our local universities or other institutions throughout the UK.

All the departments run extracurricular clubs, societies or activities, such as the Coding Club, organised by the Computer Science department, where students are able to enhance their coding skills, using a variety of different technologies including Raspberry Pis, Camjam Kits and Robotic Arms.

Students have also had the opportunity to take part in the Maths Mentoring Scheme where they work in local primary and secondary schools to support Maths teaching.

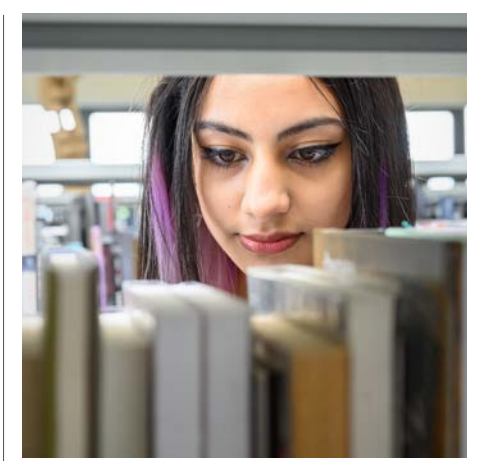
# PROGRESSION

A focus for all these extracurricular activities is, of course, career progression, and the Faculty is keen to explore this dimension, offering students a comprehensive service in terms of career advice, guidance and support, which helps ensure that Loreto students are able to access the most highly regarded science courses at the most prestigious universities.

For example, students aspiring to study Engineering at university are supported by the Physics department with a range of enrichment activities including Nuffield Summer Research Placements and university experience days.

Potential Medics, Dentists, Vets and Pharmacists are boosted by meetings and visits from expert professionals, current undergraduates, researchers and admissions tutors. Students are given one-to-one support from experienced staff on writing personal statements and preparing UCAS applications, as well as receiving intensive coaching for BMAT and UKCAT tests. Mock interviews are also an important part of the process.

Potential high achieving Scientists attend masterclasses in Maths, Biology, Chemistry and Physics delivered as part of the Cambridge University HE+ Programme, of which Loreto is a North West Hub.



“THE COMMUNITY AT LORETO IS SUCH A WELCOMING ENVIRONMENT! EVERYONE IN MY BIOLOGY CLASS HAS BEEN VERY HELPFUL - WE SHARE ENRICHMENT OPPORTUNITIES AND ENCOURAGE EACH OTHER SO THAT WE CAN ALL SUCCEED TOGETHER.”

Claire Madzura



VISIT [LORETO.AC.UK](http://LORETO.AC.UK) FOR MORE INFO



# SOCIAL SCIENCES

The Social Science Faculty offers a broad curriculum at A level from Psychology to Classical Civilisation and BTEC courses in Travel and Tourism and Health and Social Care. The faculty is known for its outstanding teaching, support given to all students and excellent results.



## CLUBS, SOCIETIES AND TALKS

**The Social Science Faculty runs a large number of different clubs and societies to support and enrich the learning of students.**

The History Society arranges a wide range of talks from university academics. There is a thriving Law Society

where many students studying Law have attended talks from a range of speakers and a number of students also participated in the Bar National Mock Trial.

The Psychology department arranges talks and has run a range of events for World Mental Health Day. The Philosophy

& Theology group run a number of different sessions including talks from academics, masters students and current Loreto students. The Health and Social Care department organise talks from a number of health care professionals.

“MY FAVOURITE MEMORY WOULD HAVE TO BE PARTICIPATING IN THE BAR MOCK TRIAL ALONGSIDE THE LAW SOCIETY. IT IMPROVED MY CONFIDENCE AND TAUGHT ME HOW TO THINK QUICKLY ON MY FEET.”

Monica Sultana

### ENRICHMENT

**TRIPS TO BARCELONA, BERLIN, MALLORCA, AMSTERDAM, MADRID, SAN FRANCISCO AND MORE!**

**ENTERPRISE EVENTS**

**STUDY TOUR TO GREECE**

**REVISION CONFERENCES**

**PRESTIGIOUS BAR NATIONAL MOCK TRIAL COMPETITIONS**

ACCOUNTING

APPLIED BUSINESS

BUSINESS

CLASSICAL CIVILISATION

CRIMINOLOGY

ECONOMICS

GOVERNMENT AND POLITICS

HEALTH AND SOCIAL CARE

HISTORY

LAW

PSYCHOLOGY

SOCIOLOGY

THEOLOGY, PHILOSOPHY AND ETHICS

TRAVEL AND TOURISM



# THE WIDER WORLD

**Students from the Faculty have had the opportunity to take part in a number of trips and visits.**

Psychologists visited San Francisco to tour Alcatraz and see the site of Professor Zimbardo's infamous Stanford Prison Experiment.

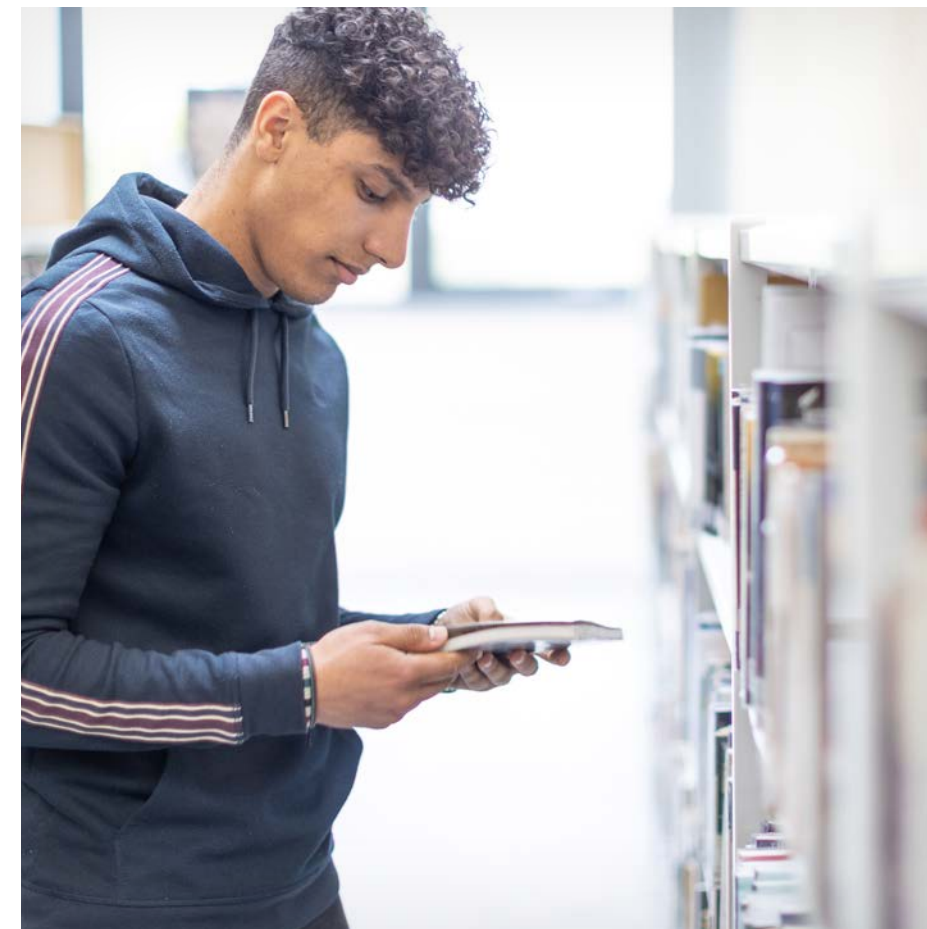
Classical Civilisation students have taken part in study tours to Greece where they explore the ancient Acropolis with its sanctuary to Athene, visit Agamemnon's capital at the Bronze Age citadel Mycenae, as well as the sanctuary of Apollo.

Travel and Tourism students have visited a range of destinations, including the Algarve in Portugal and History and Government and Politics students have visited the East Coast of the USA and the German capital Berlin.



**“BECOMING A SUBJECT AMBASSADOR FOR HEALTH AND SOCIAL CARE ALLOWED ME TO FEEL MORE OF A PART OF THE COLLEGE.”**

**” Folknan Ilenikhena**



**“MY TIME AT LORETO HAS TAUGHT ME TO BE THE VERY BEST OF ME. THE SUPPORT I WAS GIVEN AND MY AMAZING TEACHERS HAVE TAUGHT ME THAT WHEN I PUT MY MIND TO IT, I CAN DO ANYTHING. THANK YOU LORETO!”**

**” Laetitia Tavares Barro, Psychology Academic Ambassador**

# PROGRESSION

**The Social Sciences Faculty provides students with a huge range of support to access the most competitive degrees and a range of different job roles. Just some of the opportunities on offer have included:**

- Law students taking part in a mentoring scheme at The University of Manchester
- Business students taking part in Enterprise events
- Health and Social Care students taking part in a wide range of different work placements
- Students interested in a career in Nursing attend the Nursing Insights conference
- Students attend the Careers in Finance and Investment Management Insight Conference and meet with investment management practitioners
- Many departments have strong links with universities.

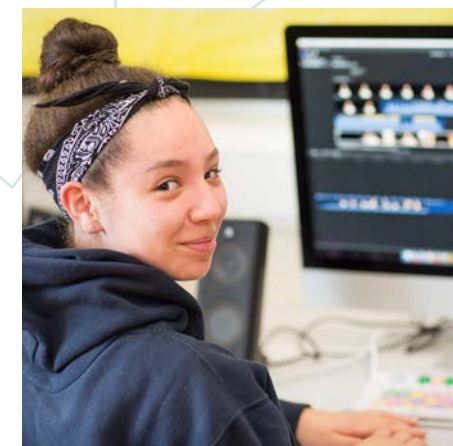


**VISIT  
LORETO.AC.UK  
FOR MORE INFO**



# LANGUAGES & ARTS

The Faculty of Languages & Arts is a diverse Faculty that inspires students with a huge range of enriching, creative extracurricular opportunities. The Faculty has access to outstanding facilities, both in College and in venues across the city, allowing students to develop to their fullest potential.



## OPPORTUNITIES

**Media Studies and Film Studies students have taken part of in a wide range of different enrichment opportunities, including events at MediaCityUK such as BBC Young Reporters, the We Call the Shots project and visits to London.**

The Music Department at Loreto offers students a wide range of extracurricular projects, including participation in a variety of ensembles, such as the Percussion Group, Jazz Band, String Orchestra, Wind Ensemble, Chamber Choir, Pop Choir and Ukulele Group. There have also been a huge number of performance opportunities at Loreto, both in College and at venues across the city.

Loreto's state-of-the-art, purpose built Ellis and Kennedy Theatre has hosted numerous theatrical successes through the academic year including the college musical, the MANCEP Shakespeare Festival, and the College play.

The English Department offers a number of enrichment opportunities

including theatre trips and a book club.

The College also has a very successful Creative Writing enrichment activity and Manchester Muse, Loreto's own e-magazine, gives our students a rare opportunity to publish pieces of their own writing in a safe, friendly and constructive environment. It is a great way to build up a public writing portfolio before going off to university or work.

“THE HELP AND SUPPORT PROVIDED BY THE IMPRESSIVE ARTS DEPARTMENT HAS AIDED ME IN MY JOURNEY TOWARDS A PROFESSIONAL CAREER.

” Maria Collins

### ENRICHMENT

**PRODUCE YOUR OWN MOVING IMAGE AND WEB BASED MEDIA**

**BBC YOUNG REPORTERS AT MEDIACITYUK, WE CALL THE SHOTS PROJECT & VISITS TO LONDON**

**COLLEGE MUSICAL, MANCEP SHAKESPEARE FESTIVAL & COLLEGE PLAY**

**MUSIC PERFORMANCES**

**THEATRE TRIPS AND BOOK CLUB**

**WORK EXPERIENCE TRIPS AND TRANSLATION COMPETITIONS**

3D DESIGN  
CREATIVE DANCE  
DRAMA AND THEATRE  
ENGLISH  
FILM STUDIES

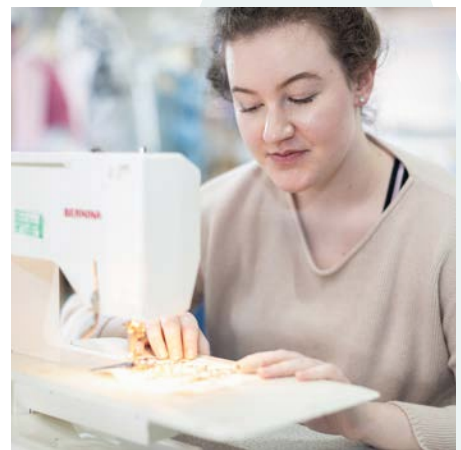
FINE ART  
FASHION AND TEXTILES  
GRAPHICS  
MEDIA STUDIES  
MODERN LANGUAGES

MUSIC  
PERFORMING ARTS  
PHOTOGRAPHY



# THE WIDER WORLD

Students from the Faculty have taken part in a number of different international trips and visits, including the Art department visiting New York and Berlin and the Languages department visiting Germany, Madrid and China.



“LORETO COLLEGE HAS BEEN AN AMAZING EXPERIENCE, ESPECIALLY WITH ALL THE HELP, MOTIVATION AND SUPPORT I RECEIVED FROM MY TEACHERS.”  
Karolina Gvozdevaite



“THE STAFF ARE VERY PASSIONATE ABOUT THEIR RESPECTIVE SUBJECTS AND ARE ALWAYS WILLING TO SUPPORT THEIR STUDENTS.”  
Haaris Ghani



# PROGRESSION

The Faculty offers a wide range of support to students to progress onto universities and careers. Some of the opportunities include:

- The close links the English Department is building with the Creative Advertising Department at UCLAN
- Students studying BTEC Performing Arts take part in a work placement in a professional theatre setting
- The Art department working with the Whitworth Gallery to provide guidance on studying and careers in the creative arts
- Masterclasses with professional actors and playwrights
- Students studying French attend lectures at Manchester Metropolitan University.



VISIT [LORETO.AC.UK](http://LORETO.AC.UK) FOR MORE INFO



# OPPORTUNITIES & ENRICHMENT

One of the College's most popular enrichment activities is the Duke of Edinburgh's Award. Loreto is one of the premier centres of student participation and the biggest sixth form provider for DofE in Greater Manchester.

Students participating in the DofE programme have to demonstrate commitment, determination, reliability and, above all, initiative. They have to take part in a physical activity, develop a skill and volunteer.

The students go on expeditions up into the hills, where they learn the skills of navigation and the value of teamwork!

The programme is a great social experience, as well as being an award recognised nationally and valued highly by employers and universities.

**"There are so many amazing enrichments at Loreto!"**

Sheza Amir

## INSPIRING STUDENT

### MARIA COLLINS

Maria is a former student of **Our Lady's RC High School** and studied A level English Literature, Law and BTEC Performing Arts. Whilst at College, Maria was involved in a wide range of performances including concerts at RNCM, the college musical and the MANCEP Shakespeare Festival. Maria also took part in the DofE Gold Award.



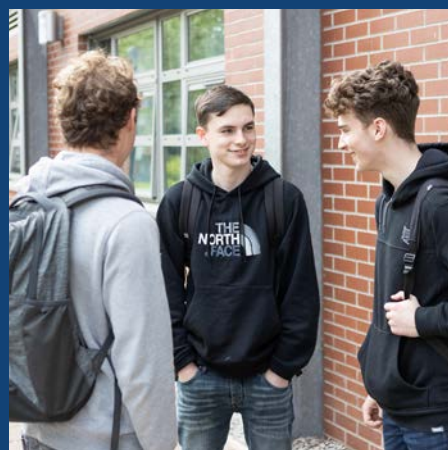




“ I GET INVOLVED IN POP CHOIR, CHAMBER CHOIR AND DEBATE CLUB. I CAME SECOND ALONG WITH MY TEAM IN A CHEMISTRY ANALYST COMPETITION. I HAVE REALLY ENJOYED BEING ABLE TO GET INVOLVED IN SO MANY ACTIVITIES AND I HAVE MADE GREAT FRIENDS.

” Alexia Kangombe

THERE ARE A HUGE RANGE OF **EXTRA** CURRICULAR OPPORTUNITIES AVAILABLE AT LORETO



# PERFORMANCES

There are numerous opportunities in College for students to get involved with performing arts projects, whether or not they are studying related subjects on their various courses. Some examples include:

## COLLEGE MUSICAL

College puts on full-scale musicals, these are massive collaborative enterprise drawing in students from right across the spectrum. Actors are required, as are singers, dancers, musicians and a multitude of technicians. 'Hairspray', 'We Will Rock You', 'Guys and Dolls', 'Elf', 'Legally Blonde', '9 to 5' and 'Chicago' have all been sell-out successes, attracting plaudits from all quarters.

## LORETO SHOWCASE

The Showcase features auditions, ticket only entry, judges, and all the associated paraphernalia of a professional show. Some extraordinarily talented students have trod the boards at the Showcase, from rappers to rock bands, solo singers and vocal groups, dancers, comedians, magicians and even belly dancers. A partisan but appreciative audience cheers each act to the rafters.



## MODEL UN

We take part in Model United Nations (MUN) events, where schools and colleges take on the role of representing different countries, selected at random, in a United Nations set up. We take part in a wide range of events, with teams from Loreto representing a diverse range of countries. Our students have been highly successful, regularly winning awards.



## DEBATE CLUB

Debate club meets regularly to thrash out the issues of the day. Large numbers of students get involved and no stone is left unturned as the arguments rage back and forth. Students have to do their research and be prepared to think on their feet, as they field questions from the judges and audience. Whilst the atmosphere of the debates is informal, and many of the contributions are humorous, they are conducted in a serious manner.



# SPORT

Loreto is recognised for its range of enrichment opportunities in Sport, Exercise and Fitness. Loreto offers all learners at the College the opportunity to participate in a wide variety of sport and activities in outstanding facilities.

## IMPRESSIVE FACILITIES

Loreto College has an impressive range of sports facilities: sports pitches, sports hall, dance studio and a fitness suite with state of the art equipment, including VO2 max testing equipment. The College also makes regular use of local leisure centres, the Amaechi Basketball Centre and international standard facilities around the city, such as Manchester Velodrome, the National Squash and

Tennis Centre and the Aquatics Centre. Team training sessions take place throughout the week so anyone can get involved. Some students involved in sports teams at Loreto are also studying sport, other students get involved for the fun of it!

Loreto attracts elite sports performers from a wide variety of disciplines including basketball, football, athletics, swimming, water polo, fencing, softball and diving. These elite students have chosen Loreto because of the combination of outstanding academic results and the high levels of staff experience in supporting sports performers at this level.

“**I AM PART OF THE NETBALL TEAM AND ALSO A MEMBER OF THE MEDICS CLUB. I HAVE REALLY ENJOYED MEETING LOTS OF NEW PEOPLE AND MAKING NEW FRIENDS.**

” **Giselle Yeboah**

## SPECIALIST COACHES

Specialist coaches from around the North West support the full time PE staff in running 12 competitive teams:

- NETBALL
- WOMEN'S FOOTBALL
- MEN'S FOOTBALL 1ST ELEVEN
- MEN'S FOOTBALL 2ND ELEVEN
- MEN'S FOOTBALL 3RD ELEVEN
- MEN'S BASKETBALL 1ST TEAM
- MEN'S BASKETBALL 2ND TEAM
- WOMEN'S BASKETBALL
- CRICKET
- BADMINTON
- RUGBY
- ATHLETICS

## RECREATIONAL ACTIVITIES

College also offers recreational activities in the following areas:

- GYM AND FITNESS
- WOMEN'S FITNESS
- DANCE
- BADMINTON
- FIVE-A-SIDE
- CRICKET NETS

**15** NATIONAL BASKETBALL TITLES WON IN EIGHT YEARS

### INSPIRING STUDENT



#### GISELLE YEBOAH

Giselle is a former student of **St Monica's RC High School** and studied Biology, Chemistry and Maths at Loreto. Giselle was awarded Loreto Netball's player of the season.







## LORETO WORLDWIDE

At Loreto, students are given the opportunity to travel all over the world. Students have crisscrossed the globe, from the rainforests of Central America and the mountains of Canada to the cities of India and the USA.

One of the most interesting and rewarding trips organised by the College sees students travel to Kolkata in India. On the two week visit the students work in four of Loreto's sister schools: Sealdah, Loreto House, Elliott Road and Entally. During the day the students help in lessons and in the evening they work with the Rainbow Children. The Rainbows are street children, taken in by the Loreto sisters and given a safe home and access

to basic needs such as food, shelter and education and, just like a rainbow brings happiness, so do the children when they appear at the gates.

During the two week visit students have an opportunity to see the fantastic work that Loreto does outside of their schools, such as the Chaulgola Project, where our students go out to remote villages to teach the village children English and Numeracy. There is also a

visit to a project in Kolkata's red light district, Sonagachi, where vulnerable children are educated. Our students have the opportunity to meet Sister Cyril, former Principal of Sealdah and advisor to the Indian government on the Rainbow Children project, and to visit Mother Theresa's house. The trip is incredibly rewarding and enriching and the students fully embrace the vibrancy of life in Kolkata.



# LORETO VALUES

All Loreto schools and communities endeavour to live by the seven core values of Mary Ward which are centred in God and rooted in the gospel.

These values are the foundation of all we do at Loreto College. They, and the fundamental British values they encompass, are promoted across the entire College in subject lessons, RE lessons, assemblies and extra-curricular activities such as Mary Ward Day.



### JUSTICE

Be in right relationships with all created things; you will live in integrity and wholeness.



### SINCERITY

Be such as you appear and appear such as you are.

*Mutual respect.*



### TRUTH

Seek for truth; reflect critically and seek answers to crucial questions.

*Rule of law.*



### JOY

Have an attitude of mind and disposition of heart that opens you to life; be optimistic, hopeful, courageous, open, welcoming, good humoured and self-accepting.



### FREEDOM

Refer all things in your life to God; you will find inner peace and the freedom to respond creatively to the needs of others.

*Individual liberty/democracy.*



### EXCELLENCE

Be ambitious for both academic excellence and human possibilities. Aim to stretch your hearts as well as minds. Focus on excellence and set the highest standards of academic and personal achievement.



### INTERNATIONALITY

Play a part in the international network of Loreto students and colleges.

*Tolerance of different cultures and religions.*

[WWW.LORETO.AC.UK/ABOUT-US/OUR-CATHOLIC-MISSION](http://WWW.LORETO.AC.UK/ABOUT-US/OUR-CATHOLIC-MISSION)

## LORETO'S MISSION

At Loreto College we strive to give you the best educational experience possible, from outstanding teaching and learning in the classroom to wonderful opportunities outside of it.



The core values of Loreto College are rooted in the Catholic faith and the life of Mary Ward, a remarkable woman who lived in 17th Century

England. She devoted her life to campaigning for the education of girls, at a time when this was considered completely unnecessary. This vision of excellent education for all, an education that develops the whole person, is central to Loreto College. The core Loreto values are Freedom, Justice, Sincerity, Truth, Excellence, Joy and Internationality which is why we cater for students from across

Manchester of all faiths and none.

When you become a student at Loreto College, you are becoming one of 70,000 Loreto students across the world. The Loreto family stretches from the cities of Kolkata and Lima, to the remote areas of Sudan and Ghana. Loreto education reaches out beyond boundaries to include young people of all cultures, faiths and social class.





# APPLICATIONS

## CONTEXT

Loreto College is a Roman Catholic College established in 1977 to serve our Partner Catholic Schools of Manchester and the surrounding districts.

### PRIORITY OF APPLICATIONS

The following priority will be given to applications:

- Pupils from Partnership Roman Catholic High Schools
- Catholic pupils from Non-Partnership Roman Catholic High Schools
- Catholic pupils from other schools
- Other pupils
- Pupils from any of the above categories who have not met the applications deadline.

Looked after children and previously looked after children have the highest priority in each category.

### LORETO'S PARTNERSHIP HIGH SCHOOLS

- |                          |                    |
|--------------------------|--------------------|
| • All Hallows            | • St John Vianney  |
| • Blessed Thomas Holford | • St Matthew's     |
| • Loreto Chorlton        | • St Monica's      |
| • Our Lady's             | • St Patrick's     |
| • St Ambrose Barlow      | • St Paul's        |
| • St Antony's            | • St Peter's       |
| • St Damian's            | • St Philip Howard |
|                          | • St Thomas More   |
|                          | • The Barlow       |

Loreto College is heavily oversubscribed and we have many more applications each year than we can offer places.

We strongly advise you to complete your application form well before the deadline date and hand it to your school so they can complete it with a reference, before posting it to us.



## PROGRESSION

**Progression to the second year of study is not automatic and each student's suitability for progression will be assessed based on performance, conduct, attendance, punctuality and application in all aspects of their programme of study.**

Though the particulars in this prospectus were correct when it was printed in August 2021, it should not be assumed that there will be no changes affecting the relevant arrangements or some matter particularised, before the start of or during the College year in question or in relation to subsequent College years, subject to demand for a particular course.

Loreto College has a Child Protection Policy that is regularly reviewed by the governors. As part of the Children and Families Act, a Local Offer is a

requirement for schools, colleges and local authorities to publish the provision available to children and young people with special educational needs or disabilities (SEND). Please see the college website for Loreto College's Local Offer.



# COLLEGE ENTRY REQUIREMENTS

## 1. ACADEMIC

### THREE/ FOUR ADVANCED LEVEL PROGRAMME

For students who anticipate studying an Advanced Level programme of three/four subjects or a hybrid Advanced Level and BTEC Level 3 course the requirements are:

- Six GCSEs Grades 9 to 4 including two of English, Maths or Science
- Two grades should be at least Grade 6
- In addition, there are individual course requirements for some subjects. Please see the website for further details.

### GUIDED PROGRAMME

Sometimes a Guided Programme is appropriate when it is not possible for a student to satisfy the above requirements – for example they may only be taking five GCSEs at school but yet be forecast to get very good grades in all of them. A full A level programme could be the most

appropriate in this case or a reduced programme of A levels and another course (a GCSE, a BTEC Level 3 Extended Certificate) may be right in other cases. Each case will be dealt with individually by staff so as to ensure the best course for the student.

### BTEC LEVEL 3 EXTENDED DIPLOMA

- Minimum of five GCSEs: Grades 9 to 4 including either English or Maths

OR:

- Level 2 Vocational Programme at Merit or above PLUS three GCSEs Grades 9 to 4 including either English or Maths.

### BTEC LEVEL 2 DIPLOMA

- Minimum of four GCSEs at Grade 3 or better.

### FOUNDATION LEVEL

NOCN CERTIFICATE IN EMPLOYABILITY

- Working at P8 or Entry Level 1

- A full commitment and ability to take part in Travel Training to become an independent traveller
- A full commitment and ability to take part in relevant work experience.

### GCSE MATHS AND ENGLISH LANGUAGE

- All students who have not achieved at least a GCSE Grade 4 in Maths and/ or English Language will be required to follow courses in the appropriate subject in order to work towards achieving these minimum grades
- Students who were awarded Grade 3 in Maths must follow the GCSE Maths course and students who were awarded Grade 3 in English must follow the GCSE English Language course
- Alternative Maths and English Language qualifications will be taken by students achieving less than a Grade 3.

## 2. OTHER ENTRY REQUIREMENTS

When considering your application we take into account several key indicators:

1. The reference provided for the pupil by the school, which must cover attendance, punctuality, conduct and application
2. The pupil's suitability for the course being applied for
3. The availability of the course which the pupil has applied for
4. The estimated grades provided by the high school and the effort the pupil has shown to achieve these
5. The pupil's wider interests and the potential contribution that they might make to the Loreto College community
6. The commitment shown to study at Loreto College
7. The appreciation of and commitment to Loreto's distinctive ethos
8. The quality of the application
9. The receipt of the application by the College no later than the application deadline.

**Enquiries about admissions should be made to the Admissions Officer. The governors are responsible for admissions.**

**Parents/Carers of students who have not been allocated a place may write to the Admissions Manager requesting a reconsideration of the decision. Requests should be addressed to: Admissions Manager, Loreto College, Chichester Road South, Manchester, M15 5PB.**

**We reserve the right not to consider incomplete applications.**





# 2021/2022 CALENDAR

## SEPTEMBER 2021

Will be seeing the Loreto Roadshow at my school.

## OCTOBER 2021

Loreto's Open Days take place - see the College and chat to the staff and students.

## NOVEMBER 2021

Get a feel for life at Loreto on Taster Day.

## DECEMBER 2021

Application forms are available from my school and Loreto. Talk to my teachers, family and friends about what would be the best course for me.

## JANUARY 2022

Complete my application form and hand it in to school to complete my reference.

## FEBRUARY 2022

Informal interviews take place - I can discuss my chosen course with Loreto staff.

## MARCH 2022

Informal interviews continue.

## APRIL 2022

Got to make sure my revision is underway - exams are not far away!

## MAY 2022

Curriculum Information Evening, another chance to meet staff and talk through my options.

## JUNE 2022

New Student Day - go to Loreto and be a student for a day.

## JULY 2022

Have a well earned rest - only a few weeks to go until I become a Loreto student!

## AUGUST 2022

GCSE results and enrolment at Loreto. Starting life as a Loreto student!

For more key dates I'll visit... [www.loreto.ac.uk/calendar/](http://www.loreto.ac.uk/calendar/)



## ADDRESS

Loreto Sixth Form College  
Chichester Road South  
Manchester M15 5PB

## LORETO DEDICATED BUSES

All come direct to the site from **Walkden, Ashton, Moston, Wythenshawe, Didsbury, The Heaton, Partington** and **Reddish**. They return in the evening with an evening service to Sale.

## BUS STOPS

- The following buses stop here:
- 1 54, 114, 256 & 263
  - 2 46-47
  - 2 42 & 42a from the Heaton and Reddish
  - 2 197 from Levenshulme & Heaton Chapel
  - 2 46 & 47 and Loreto Dedicated Buses including the 742 from the Heaton
  - 3 City Centre 85 & 86
  - 4 99, 101, 104, 105, 108 & 109
  - 5 15, 16 and Loreto Dedicated Buses

## MANCHESTER

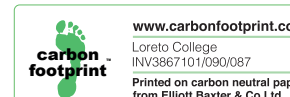
Loreto's campus is less than a mile from Manchester city centre, giving Loreto students access to a huge range of educational, cultural and social opportunities.



## CARBON FRIENDLY PROSPECTUS

Printed by **Peter Scott Printers** - by using Carbon Balanced Paper for the Loreto College Enrichment Leaflet, Application Form & Sixth Form Prospectus offset 2.096 tCO<sub>2</sub>e through Verified Carbon Standard (VCS) reduction projects and planted 2 trees thereby offsetting carbon emission, helping to prevent climate change and creating space for wildlife.

Designed by **Carbon Creative** - to offset projects Carbon Creative plant trees across Greater Manchester, with 128 trees to date for Loreto College. A fully grown tree will sequester over 20kg of carbon dioxide each year.







# Loreto

sixth form college

## CONTACT INFORMATION

Loreto Sixth Form College  
Chichester Road South  
Manchester M15 5PB

[www.loreto.ac.uk](http://www.loreto.ac.uk)

Tel: 0161 226 5156

Email: [office@loreto.ac.uk](mailto:office@loreto.ac.uk)

